

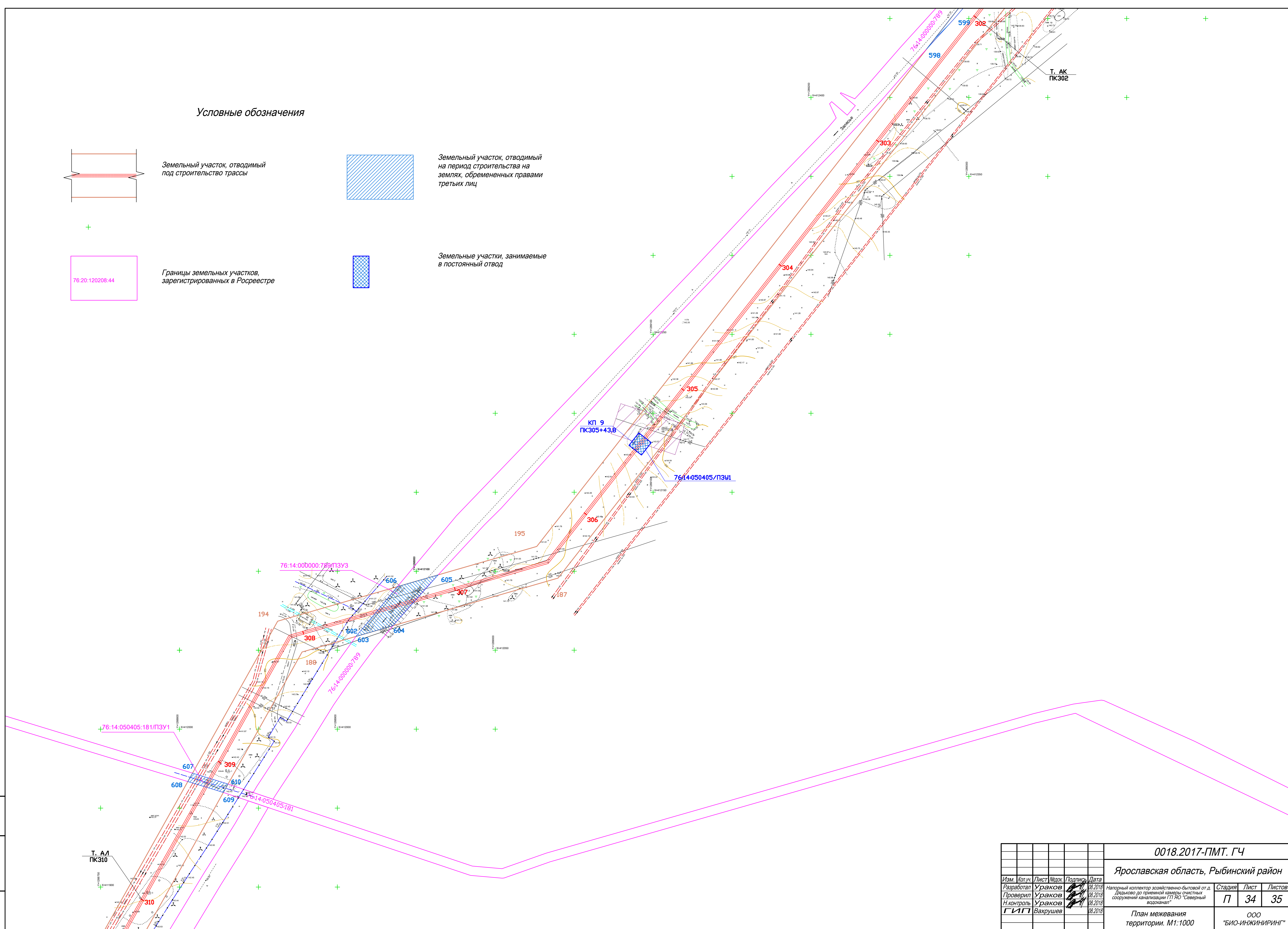
A diagram of a four-strand braid. The strands are labeled 1, 2, 3, and 4 from top to bottom. Strands 1 and 2 are on the left, and strands 3 and 4 are on the right. There is a crossing between strands 2 and 3 in the middle of the diagram.

Земельный участок, отводимый  
на период строительства на  
землях, обремененных правами  
третьих лиц

76:20:120208:44



*Земельные участки, занимаемые  
в постоянный отвод*

[illegible]

Формат А1